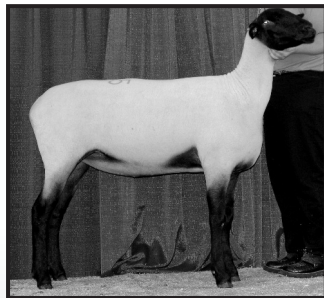
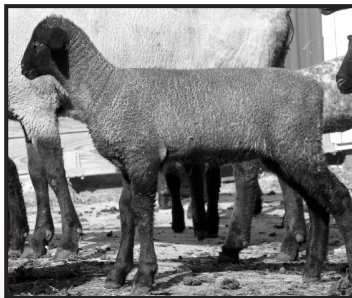
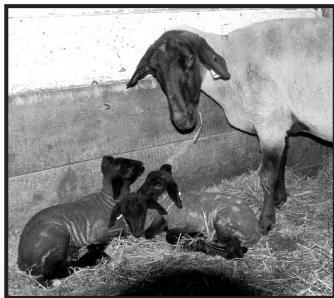


# Get more from your BUCK!

With rising feed costs, get more bang out of your buck and your time with our flock's proven performers



No fleece jobs here. Trust our foundation females to deliver natural style, outstanding length, growth and mothering ability and our superior Suffolk stud rams to produce results in your flock.

Contact Kathy Krafska at [truechamp@aol.com](mailto:truechamp@aol.com) or 641-891-4381 and visit [www.krafkasuffolks.com](http://www.krafkasuffolks.com) for more details on our naturally fast-growing stylish Suffolks backed by generations of honesty, integrity and expected progeny difference (EPDs).

## **RICH KRAFKA FAMILY SUFFOLKS**

2064 X Avenue  
Dysart, IA 52224  
Farm: 319-476-3760  
Farm Cell: 319-239-9125  
*Count on KRAFKA CATTLE CO.  
for your club calf needs*

## **KRAFKA HARKEMA SUFFOLKS**

908 525<sup>th</sup> Avenue  
Montezuma, IA 50171  
Farm: 641-623-7200  
Farm Cell: 641-891-4381  
E-mail: [truechamp@aol.com](mailto:truechamp@aol.com)

*Stylish Suffolks bred for natural muscling and accelerated growth<sup>®</sup>*



Member National Sheep  
Improvement Program (NSIP)

**Visit our Web site at  
[www.krafkasuffolks.com!](http://www.krafkasuffolks.com)**